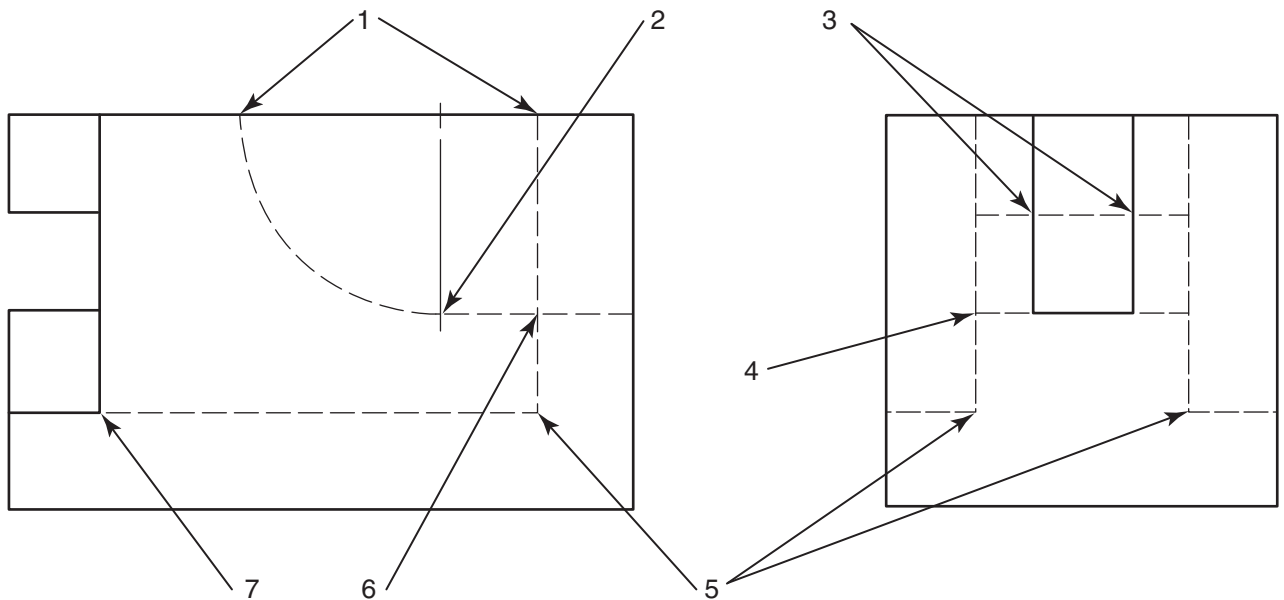


Proper Use of Hidden Lines



The following rules apply:

1. Hidden lines should end when touching a visible line.
2. Hidden lines forming arcs start with dashes at tangent points.
3. Hidden lines that cross a visible line should not touch the visible line.
4. Hidden lines that meet should touch.
5. Hidden lines that form a corner should touch.
6. Hidden lines that cross should not touch.
7. Hidden lines should start with a gap if they are a continuation of a visible line.